

PAMS Technical Documentation

RAE-3NU* Series PDA

10. Parts Lists

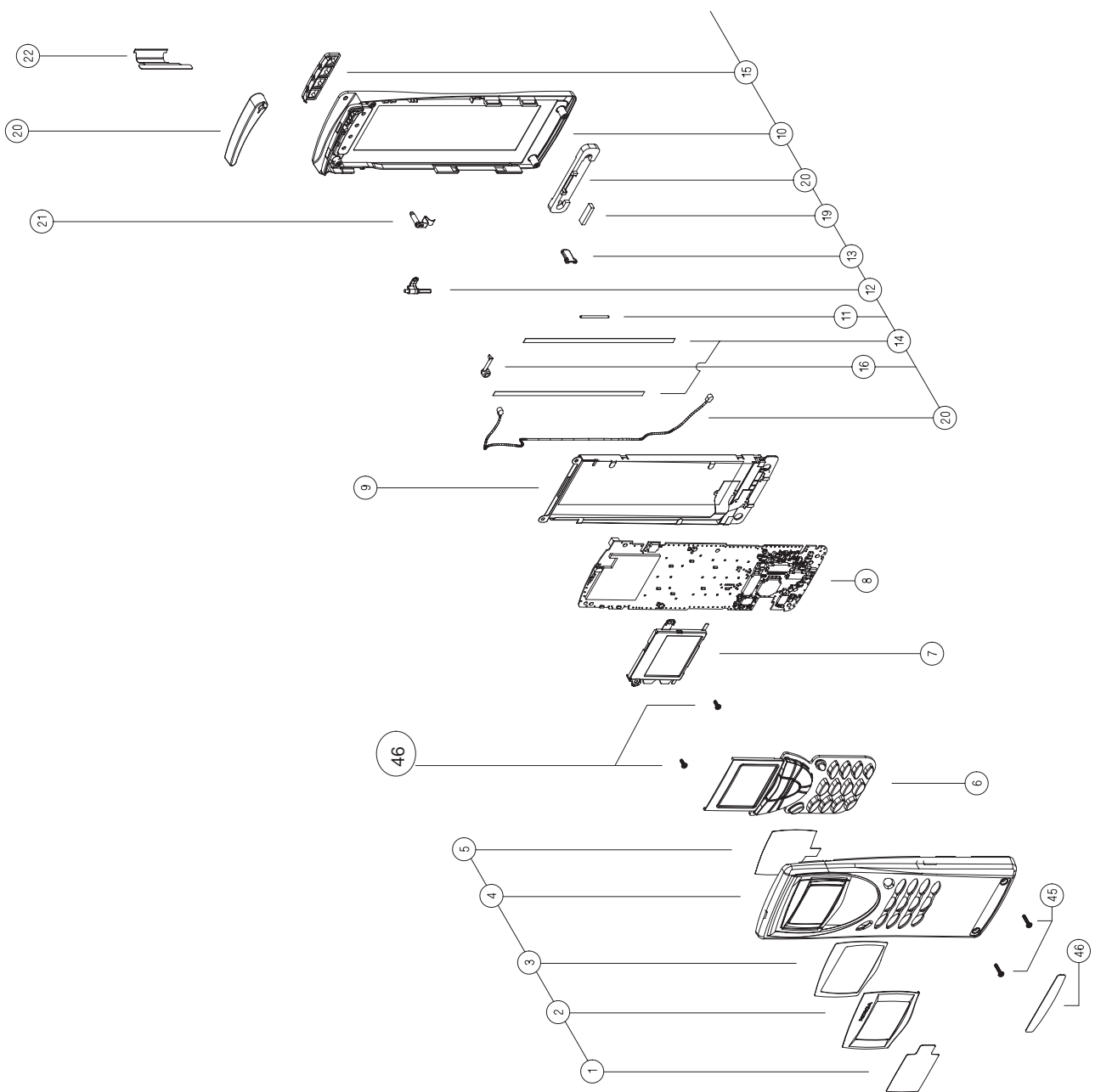
CONTENTS –Troubleshooting

	Page No
Foreword	10 – 4
Exploded Diagram 1/2	10 – 4
Exploded Diagram 2/2	10 – 5
Exploded Diagram Parts List	10 – 6
Parts Lists	10 – 7
Engine Module KL8 (0201757) (EDMS V.3.3)	10 – 7
Colour UI Module DL1 (0201281) (EDMS V.1.7)	10 – 17
Colour UI Module UL1 (0201279) (EDMS V 4.1)	10 – 18

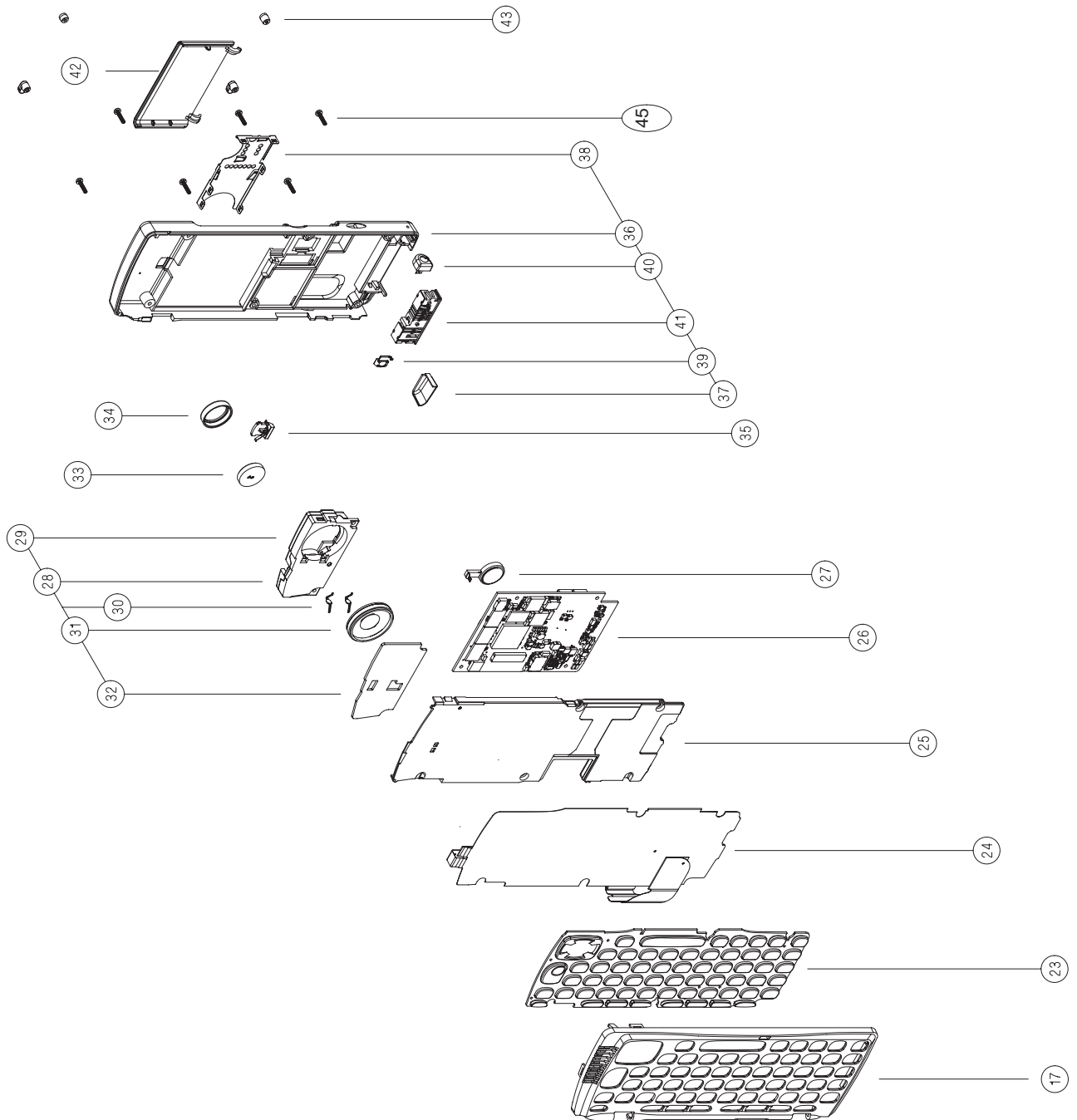
Foreword

This section of the service manual contains specific details for the RAE-3NU* spare parts and modules.

Exploded Diagram 1/2



Exploded Diagram 2/2



Exploded Diagram Parts List

Mechanical assembly parts

Part Number in Exploded View	Part Name	Material Code
1 – 5	Front cover assembly	9467043
6	Phone keymat	Refer to the variant section of the manual
7	CMT display	4850177
8	Colour UI Module UL1	0201899
9	PDA Display with LED backlight unit	4850255
10 – 19	Frame assembly	9467039
20	Antenna	0660214
21	Antenna pin	9517065
22	Flex cover	9460357
23	QWERTY keypad	Refer to the variant section of the manual
24	QWERTY/Flex Module UL8	0201667
25	Chassis assembly	9547013
26	RF/System Module KL8	Not available as a spare part
27	Backup battery	4700125
28 – 32	Audio holder assembly	9467044
33	Earpiece	5140067
34	Earpiece gasket	9480565
35	Battery latch assembly	9467045
36 – 41	Back cover assembly	9456810
36 – 41	Back cover assembly	9456810
40	Connector	
41	Connector	
42	Card cover	9451767
43	Plug	9470114
45	Screw M1.6x7 T6 FeZn black, 8 pcs	6190013
45	Screw M1.6x4 T6 FeZn yellow, 2 pcs	6190023
	LED backlight unit for PDA display	485233

Parts Lists

Engine Module KL8 (0201757) (EDMS V.3.3)

ITEM	CODE	DESCRIPTION	VALUE	TYPE
R001	1430804	Chipres 0w06 100k j		
R002	1430778	Chipres 0w06 10k j		
R003	1430726	Chipres 0w06 100r j		
R004	1430726	Chipres 0w06 100r j		
R005	1430726	Chipres 0w06 100r j		
R006	1430762	Chipres 0w06 2k2 j		
R007	1825019	Chip varistor vwm5.6v vc		VC
R050	1412279	Chipres 0w1 2r2 j		
R052	1412279	Chipres 0w1 2r2 j		
R053	1412279	Chipres 0w1 2r2 j		
R055	1412279	Chipres 0w1 2r2 j		
R101	1419003	Chipres 0w5 0r22 j 200pp		200PP
R102	1430778	Chipres 0w06 10k j		
R104	1430804	Chipres 0w06 100k j		
R105	1430804	Chipres 0w06 100k j		
R107	1430796	Chipres 0w06 47k j		
R108	1430804	Chipres 0w06 100k j		
R109	1430726	Chipres 0w06 100r j		
R111	1430770	Chipres 0w06 4k7 j		
R112	1430718	Chipres 0w06 47r j		
R113	1430796	Chipres 0w06 47k j		
R114	1430826	Chipres 0w06 680k j		
R115	1430834	Chipres 0w06 3m3 j		
R116	1430273	Chipres 0w06 44k2 f 100p		100P
R118	1430754	Chipres 0w06 1k0 j		
R119	1430423	Chipres 0w06 97k6 f 100p		100P
R121	1430778	Chipres 0w06 10k j		
R122	1620025	Res network 0w06 2x100k		2x100k
R123	1430778	Chipres 0w06 10k j		
R124	1430834	Chipres 0w06 3m3 j		
R125	1430726	Chipres 0w06 100r j		
R200	1430796	Chipres 0w06 47k j		
R201	1430681	Chipres 0w06 4r3 j		
R202	1430762	Chipres 0w06 2k2 j		
R203	1430788	Chipres 0w06 22k j		
R204	1430681	Chipres 0w06 4r3 j		
R205	1430681	Chipres 0w06 4r3 j		
R206	1430796	Chipres 0w06 47k j		
R207	1430788	Chipres 0w06 22k j		
R208	1430718	Chipres 0w06 47r j		
R210	1430778	Chipres 0w06 10k j		

10. Parts Lists

Technical Documentation

R211	1620025	Res network 0w06 2x100k	2x100k
R212	1430778	Chipres 0w06 10k j	
R213	1430796	Chipres 0w06 47k j	
R214	1430740	Chipres 0w06 330r j	
R215	1430700	Chipres 0w06 10r j	
R216	1430700	Chipres 0w06 10r j	
R217	1430784	Chipres 0w06 15k j	
R218	1620031	Res network 0w06 2x1k0 j	J
R219	1430762	Chipres 0w06 2k2 j	
R220	1430762	Chipres 0w06 2k2 j	
R221	1430681	Chipres 0w06 4r3 j	
R222	1430744	Chipres 0w06 470r j	
R300	1430812	Chipres 0w06 220k j	
R301	1430722	Chipres 0w06 68r j	
R302	1430804	Chipres 0w06 100k j	
R303	1430804	Chipres 0w06 100k j	
R304	1430804	Chipres 0w06 100k j	
R305	1430718	Chipres 0w06 47r j	
R307	1430796	Chipres 0w06 47k j	
R308	1430796	Chipres 0w06 47k j	
R309	1430770	Chipres 0w06 4k7 j	
R310	1430796	Chipres 0w06 47k j	
R311	1430778	Chipres 0w06 10k j	
R350	1430754	Chipres 0w06 1k0 j	
R351	1430754	Chipres 0w06 1k0 j	
R352	1430754	Chipres 0w06 1k0 j	
R402	1825019	Chip varistor vwm5.6v vc	VC
R403	1825019	Chip varistor vwm5.6v vc	VC
R450	1430738	Chipres 0w06 270r j	
R451	1430788	Chipres 0w06 22k j	
R452	1430738	Chipres 0w06 270r j	
R453	1430738	Chipres 0w06 270r j	
R454	1430738	Chipres 0w06 270r j	
R455	1825019	Chip varistor vwm5.6v vc	VC
R459	1825019	Chip varistor vwm5.6v vc	VC
R460	1825019	Chip varistor vwm5.6v vc	VC
R461	1825019	Chip varistor vwm5.6v vc	VC
R510	1620063	Res network 0w06 4x100r	4x100r
R530	1620019	Res network 0w06 2x10k j	J
R532	1430832	Chipres 0w06 2k7 j	
R533	1430778	Chipres 0w06 10k j	
R541	1620033	Res network 0w06 2x5k6 j	J
R546	1620033	Res network 0w06 2x5k6 j	J
R563	1430187	Chipres 0w06 47k f 200pp	200PP
R564	1430746	Chipres 0w06 560r j	
R565	1430803	Chipres 0w06 4k7 f 200pp	200PP
R610	1430726	Chipres 0w06 100r j	
R611	1430832	Chipres 0w06 2k7 j	

R613	1430764	Chipres 0w06 3k3 j	
R614	1620017	Res network 0w06 2x100r	2x100r
R640	1430738	Chipres 0w06 270r j	
R643	1430764	Chipres 0w06 3k3 j	
R645	1430832	Chipres 0w06 2k7 j	
R670	1430728	Chipres 0w06 120r j	
R671	1430728	Chipres 0w06 120r j	
R700	1430728	Chipres 0w06 120r j	
R704	1430728	Chipres 0w06 120r j	
R710	1430702	Chipres 0w06 12r j	
R730	1430762	Chipres 0w06 2k2 j	
R731	1430740	Chipres 0w06 330r j	
R732	1430746	Chipres 0w06 560r j	
R740	1430730	Chipres 0w06 150r j	
R741	1430730	Chipres 0w06 150r j	
R742	1430702	Chipres 0w06 12r j	
R743	1430734	Chipres 0w06 220r j	
R744	1430726	Chipres 0w06 100r j	
R745	1430730	Chipres 0w06 150r j	
R751	1430734	Chipres 0w06 220r j	
R753	1620507	Res network 0w04	3DB ATATT
R754	1430718	Chipres 0w06 47r j	
R755	1430714	Chipres 0w06 33r j	
R756	1430754	Chipres 0w06 1k0 j	
R757	1430754	Chipres 0w06 1k0 j	
R758	1430710	Chipres 0w06 22r j	
R763	1430740	Chipres 0w06 330r j	
R764	1430758	Chipres 0w06 1k5 j	
R790	1430803	Chipres 0w06 4k7 f 200pp	200PP
R791	1430756	Chipres 0w06 1k2 j	
R792	1430848	Chipres 0w06 12k f	
R800	1430778	Chipres 0w06 10k j	
R801	1430803	Chipres 0w06 4k7 f 200pp	200PP
R802	1430762	Chipres 0w06 2k2 j	
R805	1620505	Res network 0w04	2DB ATATT
R807	1430762	Chipres 0w06 2k2 j	
R808	1430690	Chipres jumper 0r0	
R829	1430752	Chipres 0w06 820r j	
R830	1430762	Chipres 0w06 2k2 j	
R831	1430718	Chipres 0w06 47r j	
R832	1430788	Chipres 0w06 22k j	
R833	1430762	Chipres 0w06 2k2 j	
R834	1430812	Chipres 0w06 220k j	
R835	1430726	Chipres 0w06 100r j	
C001	2320805	Chipcap x5r 100n k 10v	
C002	2320805	Chipcap x5r 100n k 10v	
C050	2312243	Chipcap x5r 4u7 k 6v3	
C052	2320544	Chipcap np0 22p j 50v	

10. Parts Lists

Technical Documentation

C053	2320805	Chipcap x5r 100n k 10v	
C054	2312243	Chipcap x5r 4u7 k 6v3	
C055	2320805	Chipcap x5r 100n k 10v	
C100	2320481	Chipcap x5r 1u k 6v3	
C101	2320481	Chipcap x5r 1u k 6v3	
C102	2320481	Chipcap x5r 1u k 6v3	
C103	2320546	Chipcap np0 27p j 50v	
C104	2320546	Chipcap np0 27p j 50v	
C105	2312243	Chipcap x5r 4u7 k 6v3	
C106	2320783	Chipcap x7r 33n k 10v	
C107	2312243	Chipcap x5r 4u7 k 6v3	
C108	2320481	Chipcap x5r 1u k 6v3	
C110	2310037	Chipcap x5r 10u m 6v3	
C111	2611695	Chiptcap 100u m 6v3	6.
C112	2310793	Chipcap x5r 2u2 k 10v	
C113	2320805	Chipcap x5r 100n k 10v	
C114	2320805	Chipcap x5r 100n k 10v	
C115	2312243	Chipcap x5r 4u7 k 6v3	
C116	2320805	Chipcap x5r 100n k 10v	
C117	2312243	Chipcap x5r 4u7 k 6v3	
C118	2320805	Chipcap x5r 100n k 10v	
C119	2611695	Chiptcap 100u m 6v3	6.
C120	2320508	Chipcap np0 1p0 c 50v	
C121	2320548	Chipcap np0 33p j 50v	
C122	2320536	Chipcap np0 10p j 50v	
C123	2310793	Chipcap x5r 2u2 k 10v	
C124	2320805	Chipcap x5r 100n k 10v	
C126	2320778	Chipcap x7r 10n k 16v	
C127	2320778	Chipcap x7r 10n k 16v	
C129	2320778	Chipcap x7r 10n k 16v	
C130	2320805	Chipcap x5r 100n k 10v	
C131	2312243	Chipcap x5r 4u7 k 6v3	
C132	2320481	Chipcap x5r 1u k 6v3	
C133	2320481	Chipcap x5r 1u k 6v3	
C134	2320481	Chipcap x5r 1u k 6v3	
C135	2320481	Chipcap x5r 1u k 6v3	
C136	2320481	Chipcap x5r 1u k 6v3	
C138	2312243	Chipcap x5r 4u7 k 6v3	
C139	2320805	Chipcap x5r 100n k 10v	
C140	2320481	Chipcap x5r 1u k 6v3	
C141	2312243	Chipcap x5r 4u7 k 6v3	
C142	2320805	Chipcap x5r 100n k 10v	
C143	2320592	Chipcap x7r 2n2 j 50v	
C144	2320481	Chipcap x5r 1u k 6v3	
C201	2320481	Chipcap x5r 1u k 6v3	
C202	2320805	Chipcap x5r 100n k 10v	
C203	2611757	Chiptcap 470u m 10v e 7.	7.
C204	2611757	Chiptcap 470u m 10v e 7.	7.

C205	2320805	Chipcap x5r 100n k 10v
C206	2320544	Chipcap np0 22p j 50v
C207	2320783	Chipcap x7r 33n k 10v
C208	2320481	Chipcap x5r 1u k 6v3
C209	2320778	Chipcap x7r 10n k 16v
C210	2320778	Chipcap x7r 10n k 16v
C211	2320778	Chipcap x7r 10n k 16v
C212	2320778	Chipcap x7r 10n k 16v
C213	2310037	Chipcap x5r 10u m 6v3
C215	2320783	Chipcap x7r 33n k 10v
C216	2320783	Chipcap x7r 33n k 10v
C217	2320544	Chipcap np0 22p j 50v
C218	2312243	Chipcap x5r 4u7 k 6v3
C219	2320783	Chipcap x7r 33n k 10v
C220	2320785	Chipcap x7r 47n k 10v
C221	2320783	Chipcap x7r 33n k 10v
C223	2320572	Chipcap x7r 330p j 50v
C224	2320546	Chipcap np0 27p j 50v
C225	2320805	Chipcap x5r 100n k 10v
C228	2320783	Chipcap x7r 33n k 10v
C229	2320783	Chipcap x7r 33n k 10v
C230	2320544	Chipcap np0 22p j 50v
C231	2310037	Chipcap x5r 10u m 6v3
C232	2320544	Chipcap np0 22p j 50v
C234	2320546	Chipcap np0 27p j 50v
C235	2320546	Chipcap np0 27p j 50v
C236	2320544	Chipcap np0 22p j 50v
C237	2320544	Chipcap np0 22p j 50v
C238	2320584	Chipcap x7r 1n0 j 50v
C239	2320778	Chipcap x7r 10n k 16v
C240	2320805	Chipcap x5r 100n k 10v
C241	2320544	Chipcap np0 22p j 50v
C245	2320481	Chipcap x5r 1u k 6v3
C300	2320805	Chipcap x5r 100n k 10v
C301	2320592	Chipcap x7r 2n2 j 50v
C302	2320803	Chipcap y5v 100n z 16v
C303	2320584	Chipcap x7r 1n0 j 50v
C304	2320805	Chipcap x5r 100n k 10v
C305	2320805	Chipcap x5r 100n k 10v
C306	2320805	Chipcap x5r 100n k 10v
C307	2320805	Chipcap x5r 100n k 10v
C308	2320805	Chipcap x5r 100n k 10v
C309	2320805	Chipcap x5r 100n k 10v
C310	2320778	Chipcap x7r 10n k 16v
C311	2320778	Chipcap x7r 10n k 16v
C312	2320778	Chipcap x7r 10n k 16v
C313	2320778	Chipcap x7r 10n k 16v
C314	2320778	Chipcap x7r 10n k 16v

10. Parts Lists

Technical Documentation

C315	2320778	Chipcap x7r 10n k 16v
C316	2320805	Chipcap x5r 100n k 10v
C317	2320805	Chipcap x5r 100n k 10v
C318	2320805	Chipcap x5r 100n k 10v
C319	2320778	Chipcap x7r 10n k 16v
C320	2320778	Chipcap x7r 10n k 16v
C321	2320778	Chipcap x7r 10n k 16v
C322	2320805	Chipcap x5r 100n k 10v
C323	2320536	Chipcap np0 10p j 50v
C350	2320805	Chipcap x5r 100n k 10v
C351	2320805	Chipcap x5r 100n k 10v
C352	2320805	Chipcap x5r 100n k 10v
C353	2320805	Chipcap x5r 100n k 10v
C354	2320778	Chipcap x7r 10n k 16v
C355	2320805	Chipcap x5r 100n k 10v
C356	2320778	Chipcap x7r 10n k 16v
C357	2320778	Chipcap x7r 10n k 16v
C358	2320778	Chipcap x7r 10n k 16v
C359	2320778	Chipcap x7r 10n k 16v
C360	2320805	Chipcap x5r 100n k 10v
C361	2320778	Chipcap x7r 10n k 16v
C362	2320805	Chipcap x5r 100n k 10v
C363	2320778	Chipcap x7r 10n k 16v
C364	2320805	Chipcap x5r 100n k 10v
C365	2320778	Chipcap x7r 10n k 16v
C366	2320805	Chipcap x5r 100n k 10v
C369	2320805	Chipcap x5r 100n k 10v
C370	2320778	Chipcap x7r 10n k 16v
C450	2320544	Chipcap np0 22p j 50v
C451	2320544	Chipcap np0 22p j 50v
C452	2320544	Chipcap np0 22p j 50v
C453	2320544	Chipcap np0 22p j 50v
C454	2313205	Chipcap y5v 2u2 z 35v
C455	2320546	Chipcap np0 27p j 50v
C456	2320764	Chipcap x7r 6n8 k 25v
C457	2320544	Chipcap np0 22p j 50v
C458	2320544	Chipcap np0 22p j 50v
C459	2320544	Chipcap np0 22p j 50v
C460	2320584	Chipcap x7r 1n0 j 50v
C461	2320778	Chipcap x7r 10n k 16v
C462	2320778	Chipcap x7r 10n k 16v
C463	2320778	Chipcap x7r 10n k 16v
C464	2320778	Chipcap x7r 10n k 16v
C510	2320135	Chipcap x7r 150n k 10v
C511	2320135	Chipcap x7r 150n k 10v
C512	2320135	Chipcap x7r 150n k 10v
C513	2320135	Chipcap x7r 150n k 10v
C520	2310505	Chipcap np0 470p j 50v

C521	2310505	Chipcap np0 470p j 50v
C522	2310505	Chipcap np0 470p j 50v
C523	2310505	Chipcap np0 470p j 50v
C530	2320562	Chipcap np0 120p j 50v
C531	2320562	Chipcap np0 120p j 50v
C532	2320785	Chipcap x7r 47n k 10v
C533	2320785	Chipcap x7r 47n k 10v
C534	2320783	Chipcap x7r 33n k 10v
C535	2320546	Chipcap np0 27p j 50v
C540	2320554	Chipcap np0 56p j 50v
C541	2320554	Chipcap np0 56p j 50v
C550	2320598	Chipcap x7r 3n9 j 50v
C553	2312243	Chipcap x5r 4u7 k 6v3
C557	2320554	Chipcap np0 56p j 50v
C560	2320548	Chipcap np0 33p j 50v
C561	2320778	Chipcap x7r 10n k 16v
C562	2320546	Chipcap np0 27p j 50v
C564	2320783	Chipcap x7r 33n k 10v
C600	2320560	Chipcap np0 100p j 50v
C601	2320560	Chipcap np0 100p j 50v
C610	2320602	Chipcap np0 4p7 c 50v
C611	2320584	Chipcap x7r 1n0 j 50v
C612	2320546	Chipcap np0 27p j 50v
C613	2320554	Chipcap np0 56p j 50v
C614	2320556	Chipcap np0 68p j 50v
C615	2320556	Chipcap np0 68p j 50v
C616	2320805	Chipcap x5r 100n k 10v
C630	2320560	Chipcap np0 100p j 50v
C631	2320560	Chipcap np0 100p j 50v
C640	2320508	Chipcap np0 1p0 c 50v
C642	2320584	Chipcap x7r 1n0 j 50v
C643	2320540	Chipcap np0 15p j 50v
C644	2320546	Chipcap np0 27p j 50v
C645	2320540	Chipcap np0 15p j 50v
C646	2320805	Chipcap x5r 100n k 10v
C647	2320530	Chipcap np0 5p6 c 50v
C648	2320540	Chipcap np0 15p j 50v
C649	2320540	Chipcap np0 15p j 50v
C701	2320554	Chipcap np0 56p j 50v
C703	2320805	Chipcap x5r 100n k 10v
C704	2320548	Chipcap np0 33p j 50v
C705	2320778	Chipcap x7r 10n k 16v
C706	2320604	Chipcap np0 18p j 50v
C714	2320783	Chipcap x7r 33n k 10v
C716	2320546	Chipcap np0 27p j 50v
C717	2320546	Chipcap np0 27p j 50v
C720	2320556	Chipcap np0 68p j 50v
C721	2320524	Chipcap np0 3p3 c 50v

10. Parts Lists

Technical Documentation

C730	2320546	Chipcap np0 27p j 50v	
C731	2320756	Chipcap x7r 3n3 k 50v	
C733	2320546	Chipcap np0 27p j 50v	
C741	2320540	Chipcap np0 15p j 50v	
C746	2320540	Chipcap np0 15p j 50v	
C747	2320556	Chipcap np0 68p j 50v	
C750	2320548	Chipcap np0 33p j 50v	
C753	2320546	Chipcap np0 27p j 50v	
C754	2320778	Chipcap x7r 10n k 16v	
C755	2310793	Chipcap x5r 2u2 k 10v	
C757	2320514	Chipcap np0 1p2 c 50v	
C758	2320584	Chipcap x7r 1n0 j 50v	
C759	2320546	Chipcap np0 27p j 50v	
C760	2320526	Chipcap np0 3p9 c 50v	
C761	2320536	Chipcap np0 10p j 50v	
C762	2320536	Chipcap np0 10p j 50v	
C780	2611757	Chiptcap 470u m 10v e 7.	7.
C781	2611757	Chiptcap 470u m 10v e 7.	7.
C783	2320481	Chipcap x5r 1u k 6v3	
C784	2320524	Chipcap np0 3p3 c 50v	
C785	2320805	Chipcap x5r 100n k 10v	
C789	2320518	Chipcap np0 1p8 c 50v	
C790	2320518	Chipcap np0 1p8 c 50v	
C792	2320560	Chipcap np0 100p j 50v	
C793	2320540	Chipcap np0 15p j 50v	
C799	2320534	Chipcap np0 8p2 c 50v	
C800	2320560	Chipcap np0 100p j 50v	
C801	2320466	Chipcap np0 220p j 50v	
C802	2310248	Chipcap np0 4n7 j 50v	
C803	2320564	Chipcap np0 150p j 50v	
C804	2320526	Chipcap np0 3p9 c 50v	
C805	2312243	Chipcap x5r 4u7 k 6v3	
C807	2320564	Chipcap np0 150p j 50v	
C808	2320805	Chipcap x5r 100n k 10v	
C830	2320560	Chipcap np0 100p j 50v	
C831	2310793	Chipcap x5r 2u2 k 10v	
C832	2320620	Chipcap x7r 10n j 16v	
C834	2320584	Chipcap x7r 1n0 j 50v	
C835	2320540	Chipcap np0 15p j 50v	
C836	2320546	Chipcap np0 27p j 50v	
C837	2320805	Chipcap x5r 100n k 10v	
C862	2320520	Chipcap np0 2p2 c 50v	
C863	2320536	Chipcap np0 10p j 50v	
L100	3203743	Ferr.bead 0r03	42R/100MH
L101	3203743	Ferr.bead 0r03	42R/100MH
L102	3203729	Ferrite bead 0r05	220R/1
L103	3640093	Chip coil 10uh m 0.55a o	O
L200	3203727	Ferrite bead 0r3	47R/100

L201	3203727	Ferrite bead 0r3 47r/100	47R/100
L450	3640035	Filt z>450r/100m 0r7max	0R7MAX
L451	3640035	Filt z>450r/100m 0r7max	0R7MAX
L452	3640035	Filt z>450r/100m 0r7max	0R7MAX
L453	3203743	Ferr.bead 0r03 42r/100mh	42R/100MH
L454	3203743	Ferr.bead 0r03 42r/100mh	42R/100MH
L502	3645177	Chip coil 27n j q26/800m	Q26/800M
L503	3646051	Chip coil 3n9 +--0n3 q28/	Q28/
L504	3646063	Chip coil 22n j q28/800m	Q28/800M
L505	3646047	Chip coil 3n3 +--0n3 q28/	Q28/
L506	3646053	Chip coil 4n7 +--0n3 q28/	Q28/
L553	4551013	Dir.coupl.897.5/1747.5mh	
L600	3646063	Chip coil 22n j q28/800m	Q28/800M
L631	3646009	Chip coil 10n j q30/800m	Q30/800M
L633	3646047	Chip coil 3n3 +--0n3 q28/	Q28/
L646	3646095	Chip coil 2n2 +--0n1 q40/	Q40/
L647	3646005	Chip coil 2n7 +--0n3 q29/	Q29/
L746	3646027	Chip coil 33n j q7/100mh	Q7/100MH
L747	3646027	Chip coil 33n j q7/100mh	Q7/100MH
L751	3203705	Ferrite bead 0.015r 42r/	42R/
L752	3645201	Chip coil 56nh j q38/200	Q38/200
L800	3648808	Chip coil 10u k q50	
B100	4510219	Crystal 32.768khz+--30ppm	32.768KHZ+--30PPM
G800	4350273	Vco 3420--3840mhz 2.7v 20	20
G830	4510261	Vctcxo 26mhz+--5ppm 2.7v	2.7V
F450	5119019	Sm fuse f 1.5a 32v 0603	0603
Z400	4120051	Emi esd filt10ch ip4026c	IP4026C
Z401	4120051	Emi esd filt10ch ip4026c	IP4026C
Z402	4120051	Emi esd filt10ch ip4026c	IP4026C
Z403	4120051	Emi esd filt10ch ip4026c	IP4026C
Z404	4120051	Emi esd filt10ch ip4026c	IP4026C
Z600	4511093	Dual saw filt925--960/180	FILT925--960/180
Z620	4511093	Dual saw filt925--960/180	FILT925--960/180
Z670	4512131	Ant.switch	880--960/1710--18
Z671	4550067	Dipl 880--960/1710--1880mh	
Z700	4511095	Saw filter	897.5+--17.5MHZ/
T600	3640429	Transf balun 900mhz+/-10	900MHZ+/-10
T630	3640421	Transf balun 1.8ghz+/-10	1.8GHZ+/-10
T700	3640429	Transf balun 900mhz+/-10	900MHZ+/-10
T740	3640421	Transf balun 1.8ghz+/-10	1.8GHZ+/-10
T800	3640423	Transf balun 3.7ghz+/-30	3.7GHZ+/-30
V001	4113655	Tvs quad bi esda6v1bc6 6	6
V101	4110441	Sch di stps0520z 20v 0.5	0.5
V102	4211251	Mfet 2sk3019 n 30v 0.1a	0.1A
V103	4113655	Tvs quad bi esda6v1bc6 6	6
V104	4110451	Sch di mbrm120l 20v 1a	
V105	4340919	Dc/dc conv 2.9--5.5v(tea1	2.9--5.5V(TEA1
V106	4211251	Mfet 2sk3019 n 30v 0.1a	0.1A

10. Parts Lists

Technical Documentation

V108	4211251	Mfet 2sk3019 n 30v 0.1a	0.1A
V200	4211251	Mfet 2sk3019 n 30v 0.1a	0.1A
V202	4113611	Emifilt/tvs	EMIF01-10005
V301	4341087	Hall ic switch	(TLE4917)T
V450	1825005	Chip varistor vwm14v	VC3
V451	4113655	Tvs quad bi esda6v1bc6 6	6
V489	4110078	Schdix2 bas70-05w 70v	70
V730	4110014	Sch di bas70-07	
V800	4210100	Tr bc848w n 30v	0.1A100M
V801	4210183	Tr bfp193w n 8ghz f1.3-2	F1.3-2
V903	4210185	Tr bfp520 2.5v 40ma 45gh	45GH
V904	4210074	Tr bfp420 n 4.5v35ma 20g	20G
V905	4210100	Tr bc848w n 30v 0.1a100m	0.1A100M
V907	4210100	Tr bc848w n 30v 0.1a100m	0.1A100M
D101	4341127	Mcu reset 2.8v	(NCP300)
D102	4341037	IC 1xd ff 1.8/5.5v	nc7sz175
D300	4370775	Madlinda v2erom1	F731689
D350	4341067	Sdram 64mbit 104mhz 2v7	2V7
D351	4341249	Flash 4mx16 52mhz/70ns 1	1
D352	4341249	Flash 4mx16 52mhz/70ns 1	1
D353	4341291	Diskonchip 16mb 3v/1.8v	3V/1.8V
N050	4860101	irda tfdu5102 9k6-1m152	9K6-1M152
N100	4370719	Ccont 2m wfd163mg64t/8 l	L
N101	4370621	Chaps v2.0 u423v20g36t	
N102	4341035	Reg 2.8v/500ma (tps77628	(TPS77628
N103	4341091	Reg 3.0v/150ma(tk71630)s	
N104	4341083	Reg 3.3v/150ma (tk71633)	(TK71633)
N200	4370793	Cobba_gjp v4.1 v257jg64t	V257JG64T
N201	4340727	IC af amp 1.1w	2.0-5 .. lm4871
N505	4370731	hagar 4	sttza8ig80t
N600	4340719	Tk11247bmc volt reg 4.7v	4.7V
N702	4350203	IC pw amp 880-915/1710-1785	
X001	5460045	Conn mmc 6pol spr 30v 0.	0.
X002	5159001	Sm contact pad 1.8x1.35	1.8x1.35
X100	5409175	Sm batt conn 4pol spr. 1	1
X101	5409177	Sm sim card conn 2x3pol	2x3pol
X102	5409187	Sm conn 2x1f p1.27 500v	500V
X400	5469147	Sm conn 2x35m p0.5 50v	
X499	5420035	Sm conn rf 50r 100v 3ghz	3GHZ
A500	9517049	Rf-shield can #2 dmc021	DMC021
A501	9517048	Rf-shield can #1 dmc021	DMC021
	9381228	Flex cover label dmc0445	DMC0445
	9854586	PWB KL8_05 72.4X52.4X1.0	

Colour UI Module DL1 (0201281) (EDMS V.1.7)

Module with LCDs

ITEM	CODE	DESCRIPTION	VALUE	TYPE
I008	0201899	UI Module without LCDs ..		UL1
I007	4850177	Cmt lcd module		84x48dotmx+drvCog
I009	4850225	LCD display module		640x200d+cog Co4096

Colour UI Module UL1 (0201279) (EDMS V 4.1)

Module with LCDs				
ITEM	CODE	DESCRIPTION	VALUE	TYPE
R001	1430804	Chipres 0w06 100k j		
R002	1430778	Chipres 0w06 10k j		
R003	1430122	Chipres 0w06 4m7 j		
R004	1825019	Chip varistor vwm5.6v vc		VC
R050	1430832	Chipres 0w06 2k7 j		
R051	1430726	Chipres 0w06 100r j		
R052	1430770	Chipres 0w06 4k7 j		
R053	1430187	Chipres 0w06 47k f 200pp		200PP
R054	1430726	Chipres 0w06 100r j		
R055	1430734	Chipres 0w06 220r j		
R056	1430770	Chipres 0w06 4k7 j		
R057	1430734	Chipres 0w06 220r j		
R058	1430770	Chipres 0w06 4k7 j		
R059	1430726	Chipres 0w06 100r j		
R060	1430734	Chipres 0w06 220r j		
R061	1430770	Chipres 0w06 4k7 j		
R062	1430734	Chipres 0w06 220r j		
R063	1430792	Chipres 0w06 33k j		
R064	1430726	Chipres 0w06 100r j		
R065	1430804	Chipres 0w06 100k j		
R066	1430792	Chipres 0w06 33k j		
R067	1430820	Chipres 0w06 470k j		
R068	1430848	Chipres 0w06 12k f		
R069	1430778	Chipres 0w06 10k j		
R070	1430792	Chipres 0w06 33k j		
R071	1430754	Chipres 0w06 1k0 j		
R072	1430187	Chipres 0w06 47k f 200pp		200PP
R073	1430734	Chipres 0w06 220r j		
R074	1430770	Chipres 0w06 4k7 j		
R075	1430820	Chipres 0w06 470k j		
R076	1430820	Chipres 0w06 470k j		
R077	1430842	Chipres 0w06 680k f		
R078	1430800	Chipres 0w06 68k j		
R079	1430830	Chipres 0w06 1m0 j		
R080	1430734	Chipres 0w06 220r j		
R081	1430820	Chipres 0w06 470k j		
R082	1430734	Chipres 0w06 220r j		
R083	1430770	Chipres 0w06 4k7 j		
R084	1430726	Chipres 0w06 100r j		
R085	1430770	Chipres 0w06 4k7 j		
R086	1430734	Chipres 0w06 220r j		
R087	1620063	Res network 0w06 4x100r		4x100r
R088	1620063	Res network 0w06 4x100r		4x100r

R089	1620063	Res network 0w06 4x100r	4x100r
R090	1620063	Res network 0w06 4x100r	4x100r
R091	1430726	Chipres 0w06 100r j	
R092	1430792	Chipres 0w06 33k j	
R093	1430726	Chipres 0w06 100r j	
R150	1430778	Chipres 0w06 10k j	
R152	1430778	Chipres 0w06 10k j	
R153	1430810	Chipres 0w06 180k j	
R154	1430720	Chipres 0w06 56r j	
R155	1430748	Chipres 0w06 680r j	
R156	1430786	Chipres 0w06 18k j	
R157	1430760	Chipres 0w06 1k8 j	
R158	1430157	Chipres 0w06 18r j	
R159	1430157	Chipres 0w06 18r j	
R200	1430907	Chipres 0w06 11k f	
R201	1430784	Chipres 0w06 15k j	
R202	1430734	Chipres 0w06 220r j	
R203	1430695	Chipres 0w06 6r8 j	
R204	1430722	Chipres 0w06 68r j	
R205	1430746	Chipres 0w06 560r j	
R206	1430700	Chipres 0w06 10r j	
R207	1430700	Chipres 0w06 10r j	
R208	1430700	Chipres 0w06 10r j	
R209	1430700	Chipres 0w06 10r j	
C001	2320779	Chipcap x7r 100n k 16v	
C002	2320779	Chipcap x7r 100n k 16v	
C003	2312243	Chipcap x5r 4u7 k 6v3	
C004	2320584	Chipcap x7r 1n0 j 50v	
C005	2312243	Chipcap x5r 4u7 k 6v3	
C006	2312243	Chipcap x5r 4u7 k 6v3	
C007	2320805	Chipcap x5r 100n k 10v	
C008	2320805	Chipcap x5r 100n k 10v	
C009	2312243	Chipcap x5r 4u7 k 6v3	
C010	2312243	Chipcap x5r 4u7 k 6v3	
C011	2320554	Chipcap np0 56p j 50v	
C012	2320554	Chipcap np0 56p j 50v	
C050	2320785	Chipcap x7r 47n k 10v	
C051	2320568	Chipcap x7r 220p j 50v	
C052	2320576	Chipcap x7r 470p j 50v	
C053	2320805	Chipcap x5r 100n k 10v	
C054	2320568	Chipcap x7r 220p j 50v	
C055	2320568	Chipcap x7r 220p j 50v	
C056	2320785	Chipcap x7r 47n k 10v	
C057	2320785	Chipcap x7r 47n k 10v	
C058	2320560	Chipcap np0 100p j 50v	
C059	2312243	Chipcap x5r 4u7 k 6v3	
C060	2320785	Chipcap x7r 47n k 10v	
C061	2320568	Chipcap x7r 220p j 50v	

10. Parts Lists

Technical Documentation

C062	2312205	Chipcap x7r 47n k 50v
C063	2312243	Chipcap x5r 4u7 k 6v3
C064	2312203	Chipcap y5v 1u z 50v
C065	2320560	Chipcap np0 100p j 50v
C066	2320568	Chipcap x7r 220p j 50v
C067	2320560	Chipcap np0 100p j 50v
C068	2313205	Chipcap y5v 2u2 z 35v
C069	2320120	Chipcap x7r 22n k 25v
C070	2320131	Chipcap x7r 33n k 16v
C071	2320604	Chipcap np0 18p j 50v
C072	2312205	Chipcap x7r 47n k 50v
C073	2312205	Chipcap x7r 47n k 50v
C074	2320576	Chipcap x7r 470p j 50v
C075	2320805	Chipcap x5r 100n k 10v
C076	2320481	Chipcap x5r 1u k 6v3
C077	2320481	Chipcap x5r 1u k 6v3
C078	2312243	Chipcap x5r 4u7 k 6v3
C079	2320805	Chipcap x5r 100n k 10v
C080	2320805	Chipcap x5r 100n k 10v
C081	2320805	Chipcap x5r 100n k 10v
C082	2312243	Chipcap x5r 4u7 k 6v3
C083	2320544	Chipcap np0 22p j 50v
C084	2312243	Chipcap x5r 4u7 k 6v3
C085	2312243	Chipcap x5r 4u7 k 6v3
C086	2312243	Chipcap x5r 4u7 k 6v3
C088	2320546	Chipcap np0 27p j 50v
C089	2320546	Chipcap np0 27p j 50v
C090	2320544	Chipcap np0 22p j 50v
C091	2320544	Chipcap np0 22p j 50v
C092	2320546	Chipcap np0 27p j 50v
C093	2320546	Chipcap np0 27p j 50v
C094	2320546	Chipcap np0 27p j 50v
C095	2320546	Chipcap np0 27p j 50v
C096	2320546	Chipcap np0 27p j 50v
C097	2320546	Chipcap np0 27p j 50v
C098	2320538	Chipcap np0 12p j 50v
C099	2320604	Chipcap np0 18p j 50v
C100	2320604	Chipcap np0 18p j 50v
C101	2320778	Chipcap x7r 10n k 16v
C102	2320805	Chipcap x5r 100n k 10v
C103	2320550	Chipcap np0 39p j 50v
C104	2320550	Chipcap np0 39p j 50v
C105	2320550	Chipcap np0 39p j 50v
C106	2320550	Chipcap np0 39p j 50v
C107	2320550	Chipcap np0 39p j 50v
C108	2320550	Chipcap np0 39p j 50v
C109	2320550	Chipcap np0 39p j 50v
C110	2320544	Chipcap np0 22p j 50v

C111	2320544	Chipcap np0 22p j 50v
C112	2320544	Chipcap np0 22p j 50v
C113	2320550	Chipcap np0 39p j 50v
C114	2320538	Chipcap np0 12p j 50v
C115	2320550	Chipcap np0 39p j 50v
C116	2320538	Chipcap np0 12p j 50v
C117	2320538	Chipcap np0 12p j 50v
C118	2320550	Chipcap np0 39p j 50v
C119	2320550	Chipcap np0 39p j 50v
C120	2320544	Chipcap np0 22p j 50v
C121	2320544	Chipcap np0 22p j 50v
C122	2320604	Chipcap np0 18p j 50v
C123	2320546	Chipcap np0 27p j 50v
C124	2320550	Chipcap np0 39p j 50v
C125	2320540	Chipcap np0 15p j 50v
C126	2320604	Chipcap np0 18p j 50v
C127	2320544	Chipcap np0 22p j 50v
C128	2320554	Chipcap np0 56p j 50v
C129	2320550	Chipcap np0 39p j 50v
C130	2320550	Chipcap np0 39p j 50v
C131	2320550	Chipcap np0 39p j 50v
C133	2320538	Chipcap np0 12p j 50v
C150	2320805	Chipcap x5r 100n k 10v
C151	2320550	Chipcap np0 39p j 50v
C152	2312415	Chipcap x5r 4u7 m 10v
C153	231J001	Chipcap x7r 2u2 k 16v
C154	2320550	Chipcap np0 39p j 50v
C155	2320805	Chipcap x5r 100n k 10v
C156	2320805	Chipcap x5r 100n k 10v
C157	2320550	Chipcap np0 39p j 50v
C158	2320805	Chipcap x5r 100n k 10v
C159	2320805	Chipcap x5r 100n k 10v
C160	2320618	Chipcap x7r 4n7 j 25v
C200	2320550	Chipcap np0 39p j 50v
C250	2320560	Chipcap np0 100p j 50v
C251	2320560	Chipcap np0 100p j 50v
C252	2320560	Chipcap np0 100p j 50v
C253	2320560	Chipcap np0 100p j 50v
C254	2320560	Chipcap np0 100p j 50v
C255	2320560	Chipcap np0 100p j 50v
C256	2320560	Chipcap np0 100p j 50v
C257	2320560	Chipcap np0 100p j 50v
C258	2320560	Chipcap np0 100p j 50v
C259	2320560	Chipcap np0 100p j 50v
C260	2320550	Chipcap np0 39p j 50v
C261	2320550	Chipcap np0 39p j 50v
C262	2320550	Chipcap np0 39p j 50v
C263	2320550	Chipcap np0 39p j 50v

10. Parts Lists

Technical Documentation

L050	3640485	Chip coil 1mh m 0.08a 6.	6.
L051	3203747	Ferrite bead 0r8 75r/100	75R/100
L150	3640487	Choke 6u8 m 1.2a 0r065	
V001	4211391	Mfet p fdc6323l switch 3	3
V050	4110601	Di fast 1ss355 80v0.1a<4	80V0.1A<4
V051	4110601	Di fast 1ss355 80v0.1a<4	80V0.1A<4
V052	4110601	Di fast 1ss355 80v0.1a<4	80V0.1A<4
V053	4110601	Di fast 1ss355 80v0.1a<4	80V0.1A<4
V054	4110601	Di fast 1ss355 80v0.1a<4	80V0.1A<4
V055	4110615	Dix2 fast da204u 20v o.1	O.1
V056	4219922	Trx2 umz1n n&p 40v 0.1a	0.1A
V057	4115863	Schdix2 rb480k 40v ir<1u	IR<1U
V058	4110615	Dix2 fast da204u 20v o.1	O.1
V059	4219908	Trx2 umt1 *** no new des	DES
V060	4115863	Schdix2 rb480k 40v ir<1u	IR<1U
V061	4211202	Dmfet bss84 *** no new d	D
V062	4211239	Mfet bsh201 p 60v 0.3a <	<
V066	4208607	Fet bss138 n 50v 0.2a	
V067	4110601	Di fast 1ss355 80v0.1a<4	80V0.1A<4
V069	4115863	Schdix2 rb480k 40v ir<1u	IR<1U
V070	4219922	Trx2 umz1n n&p 40v 0.1a	0.1A
V072	4110591	Schdix2 rb706f-40 40v se	SE
V073	4110601	Di fast 1ss355 80v0.1a<4	80V0.1A<4
V150	4110441	Sch di stps0520z 20v 0.5	0.5
V151	4110403	zdi bzx84-b13 13v 2% 0.2	0.2
V152	4211239	Mfet bsh201 p 60v 0.3a <	<
V153	4211251	Mfet 2sk3019 n 30v 0.1a	0.1A
V160	4211251	Mfet 2sk3019 n 30v 0.1a	0.1A
V199	4219904	Trx2 umx1n *** no new de	DE
V200	4860301	Led lwy87s white 90' vf<	VF<
V201	4860301	Led lwy87s white 90' vf<	VF<
V202	4219904	Trx2 umx1n *** no new de	DE
V203	4864531	Led lwq983 white vf<3.6v	VF<3.6V
V204	4864531	Led lwq983 white vf<3.6v	VF<3.6V
V205	4864531	Led lwq983 white vf<3.6v	VF<3.6V
V206	4864531	Led lwq983 white vf<3.6v	VF<3.6V
V207	4864531	Led lwq983 white vf<3.6v	VF<3.6V
V208	4864531	Led lwq983 white vf<3.6v	VF<3.6V
V209	4864531	Led lwq983 white vf<3.6v	VF<3.6V
V210	4864531	Led lwq983 white vf<3.6v	VF<3.6V
V211	4219904	Trx2 umx1n *** no new de	DE
V212	4219904	Trx2 umx1n *** no new de	DE
V213	4219904	Trx2 umx1n *** no new de	DE
V214	4219904	Trx2 umx1n *** no new de	DE
D050	4340222	IC 4xor	74ac32
D051	4340451	Tc7sl04fu 1xinv 1input 1	1
D052	4340451	Tc7sl04fu 1xinv 1input 1	1
D054	4341135	Color lcd	L2E450

N050	4341017	Reg 3.8v/150ma	ba038lmsg
N150	4341155	Dc/dc conv 1.24..14v	1.24..14V(LM2
N151	4340861	1xop amp 2.7–5.5v	(LMV32
S250	5219013	Sm sw tact spst 12v 50ma	50MA
S251	5219013	Sm sw tact spst 12v 50ma	50MA
S260	5219013	Sm sw tact spst 12v 50ma	50MA
S261	5219013	Sm sw tact spst 12v 50ma	50MA
X001	5469819	Sm conn 2x25f p0.5 0.5a	0.5A
X002	5469155	Sm conn fpc 10pol p0.5 9	9
X003	5469157	Sm conn fpc 20pol p0.5 9	9
X004	5420035	Sm conn rf 50r 100v 3ghz	3GHZ
X006	5469153	Sm stacker 1x4 spr. p3.5	P3.5
X007	5469813	Sm conn 2x5f p0.5 0.5a	
	9854606	PWB UL1_07 147.4X52.0X0.	

This page intentionally left blank.